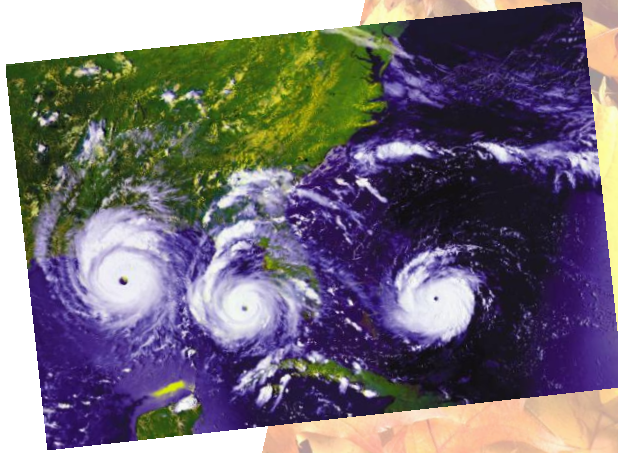




# The Noteworthy News Louisiana Federation of Music Clubs



*Organized and Affiliated with NFMC Since 1928*  
Irene Vile, President



Summer/Fall 2011



Dear Music Club Friends

Hurricane Irene has passed into the record books (no comments on any similarities are necessary), Tropical Storm Lee has drenched half of the nation, and Hurricanes Maria, Phillipe and one other are making up their minds in the Atlantic, so it must be FALL in the South. I have officially declared FALL in my den by bringing out my orange colored artificial foliage. It is time to catch up on all the Federation news and look ahead to our upcoming year. Grab a cup of whatever is your favorite and join me in your den to catch up....

## JUNE

**NFMC CONVENTION – McLean, VA**  
June 6<sup>th</sup> – June 12<sup>th</sup>

Kay and Bob Hawthorne, Wesley McCoy, Melanie Perez, and I attended the national convention during the first week of June. Melanie and I arrived at the hotel at 2:00PM and my first meeting was at 4:30PM. Meetings start at 7:30 AM and go all day long. There are Committee meetings, general business meetings, workshops, luncheons, dinners, concerts and one formal banquet. It is possible to go from 7:00 AM to 10:30PM and never see your room. It is overwhelming and I come away with a sense that I wish every member could attend at least one national convention. LFMC is barely scratching the surface of what NFMC has to offer its membership. There are financial opportunities for just about every situation.



Irene, Melanie, Kay and Bob

Congratulations to:

Wesley McCoy – NFMC chairman of the Myrtle Mehan/ Hazel Morgan Music Education  
Scholarship

Kay Hawthorne – NFMC Arts Division Chairman

Melanie Perez – NFMC Recording Secretary

I cannot possibly include in this newsletter all the information received during convention. Please visit the NFMC web site: <http://nfmc-music.org>. There are changes in: the Festivals rules, changes in the Junior Composers contest, and changes in various award amounts. Under “Festivals” there are 2 different links containing important information. One link gives additional clarification of Bulletin rules, the other is “most often asked questions.” Please read carefully your Music Club Magazine and Junior Keynotes Magazine. Testing of the new national database will begin this year, 2011-12, with a limited number of state Festivals participating. LFMC will not be involved with this testing, but I do expect LFMC will be participating in the 2012-13 Festivals year.



Outgoing National President, Lana Bailey, incoming National Treasurer, Suzanne Carpenter and incoming National Recording Secretary, Melanie Perez

## **JULY**

### **NFMC -SOUTH EASTERN REGION – BREVARD MUSIC CENTER**

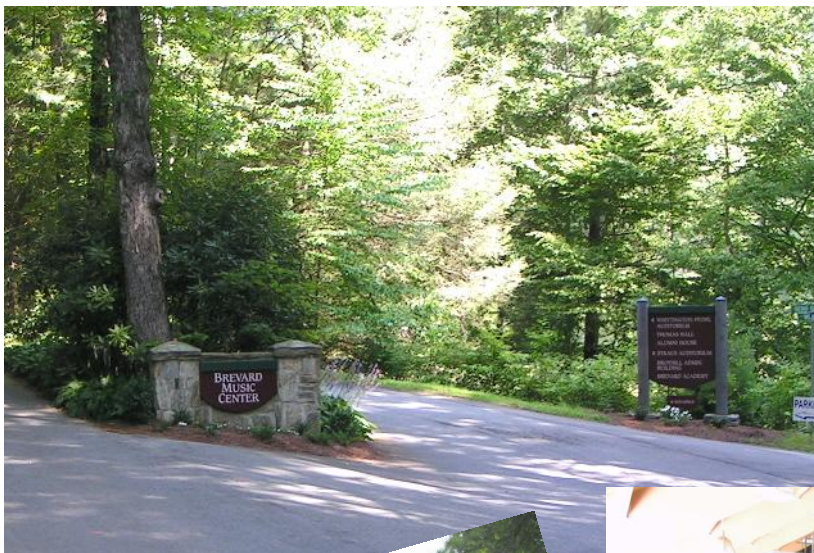
July 8<sup>th</sup> – 10<sup>th</sup>

Mark and I were able to attend the Saturday activities this year of the NFMC SE Region. The morning business meeting included an update on the newly established regional scholarship to Brevard, “Bucks for

Brevard.” The five-year goal of raising \$25,000 has been met in just 2 years. This new \$1,500 award will be offered yearly. Barbara Hildebrand is the new SE Region Vice President.

A new project of a SE Regional Cookbook will begin this year. If anyone knows of a previous Louisiana Young Artist Winner or perhaps a past PPSCA winner who is now performing, we would love to include one of their recipes in the cookbook. Monies raised from the sale of this cookbook will go to fully fund this regional scholarship.

During our one day at Brevard, besides the business meeting, we attended the Janiec Opera company’s performance of *La Traviata* in the afternoon, and heard Peter Serkin perform the Bartok Piano Concerto #3 and the Brevard Music Center Orchestra perform Stravinsky’s *Firebird Suite* that night. It amazes me the opportunities Federation offers!



# AUGUST



## FALL BOARD MEETING:

August 13<sup>th</sup>

On August 13<sup>th</sup> your LFMC Board of Directors came together for a 5 hour business meeting. We had one of our largest groups participating, that I can remember. I want to take this opportunity to thank each of those present for their support, dedication, and endurance! We were able to take care of an amazing amount of state business which will have a direct impact on our local clubs. Junior Counselors, and Juniors. I cannot say this enough, but EVERY CLUB NEEDS REPRESENTATION AT THE BOARD MEETINGS.

I have listed below, the individuals that make up the current LFMC Board of Directors:

### Elected Officers:

President: Irene Vile  
President Elect: Joy Harvey  
Vice President: open  
Second Vice President: Ruth Smith  
Treasurer: Kim Harvey  
Recording Secretary: Marcia Colonius

### LFMC Regional Area Club Presidents:

#### North Eastern:

Monroe Guild: Vicky Krutzer  
Monroe Teachers: Ruth Smith  
Ruston : Shirley Maynor

#### North Western:

Natchitoches: Donna Rose  
Shreveport/Bossier City: Judy Brown

#### South Western:

Lafayette: Eugenia Hagood  
Lake Charles: Keith Chamberlain

#### South Central:

BR Music Club: Gwen Redding  
BR Philharmonic: Lorice Say  
BR Teachers: Mary Smith  
BR Auxiliary: Lesley McLaughlin  
Gonzales: Alison Dubuc

#### South Eastern:

Metairie: Loann Menzel  
New Orleans: Rachelen Lien  
North Shore: Kathy Martin  
Thibodaux Music: Anna Kearns  
Thibodaux Teachers: Casey Hayes

### Active Past State Presidents:

Edith Kirkpatrick  
Kay Hawthorne  
Melanie Perez  
Dottie Smith  
Ruth Smith

### National Board Members:

Kay Hawthorne  
Melanie Perez

## Division Chairmen:

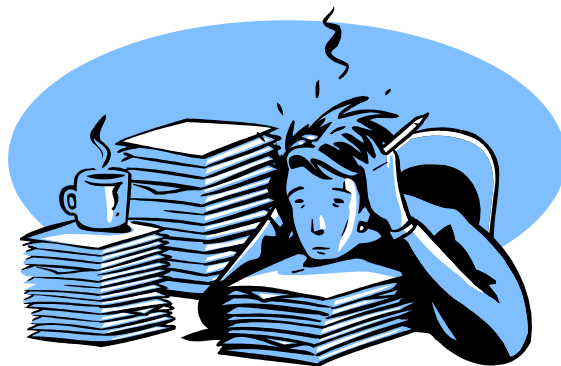
1. Administration: Irene Vile
2. American Music: Ruth Smith
3. Arts Division: Ellen Bordelon
4. Competition and Awards: Melanie Perez
5. Finance: Wesley McCoy
6. Junior: Joy Harvey
7. Membership and Education: Iris Villarrubia
8. Public Relations: Judy Zahrndt
9. Student/Collegiate: Eugenia Hagood

## Committee Chairmen:

- |                                |                   |
|--------------------------------|-------------------|
| Composition:                   | Robin Thomas      |
| Directory:                     | Randy Smith       |
| Music in Schools and Colleges: | Edith Kirkpatrick |
| Festivals                      |                   |
| Records/Cups                   | Kay Hawthorne     |
| Materials:                     | Mary Nott         |
| Opera:                         | Ken Nelson        |
| Website:                       | Melanie Perez     |
| Historian:                     | open              |
| Student Auditions              | Carol Britt       |
| Liability Insurance            | Anna Kearns       |

Each of the above listed board members have received a copy of the minutes of our 5 hour meeting. Talk with your board member to get the inside scoop. Or, you may contact any of the board members by using the email link on the LFMC web site. The best way LFMC has to communicate with our members is our web site: [www.lfmc-music.org](http://www.lfmc-music.org) Plan to visit this site periodically throughout the year. All deadlines, all applications, all forms necessary for Federation Festivals can be found on this site. Stay informed, stay connected.

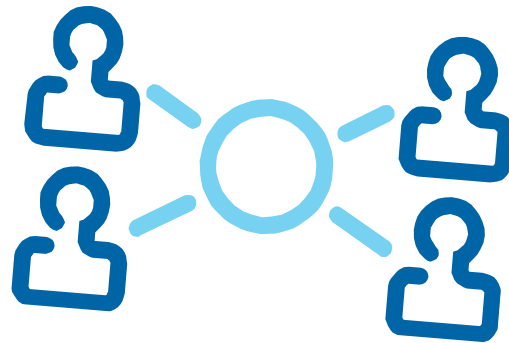
## September, October, November



These are the months where we get organized! Our Senior and Junior club dues and contact information are being collected, recorded, and sent from the local Senior club, to state, and then from state to national. Our new state treasurer, Kim Harvey, has developed an Excel spreadsheet to facilitate the process. He has also established deadlines to help him meet the NFMC deadlines. We need your help and cooperation in getting all the necessary information. As president my personal focus is on two pieces of information: the members name and email address. I know Kim needs additional info, but we need to make sure email addresses are current. Clubs may contact Kim at: [harveykl@dow.com](mailto:harveykl@dow.com). Thank you for your help in this matter.

**Senior Club AND Junior Club Dues DEADLINES ARE: NOVEMBER 1<sup>st</sup>.**

A couple of weeks ago, I sent out an inquiry to all the club presidents. I wanted to know what, if anything, the clubs were doing to encourage new membership, or if the clubs were trying to provide any new activities. I thought this newsletter would be a good venue for sharing ideas. Rachelen Lien, New Orleans, replied back and said their club holds a Jazz Contest each fall, a workshop weekend with Peter Collins, and Rachelen will present a workshop on Intermediate to Advanced repertoire. The New Orleans club meets with a performance group, Cadenzas, six times during the year. Metairie Music is hosting an evening “Meet and Greet” meeting for the sole purpose of inviting prospective new members. MMC meets once a month. Some of the meetings have performances, but this year two of the meetings will be geared to music education. Ulrike Masakowski will give presentation on improvisation, and Sue Steck-Turner will address teaching students with learning disabilities.



The issue of attracting new members was addressed this year at the national Convention State Presidents council meeting. After sharing thoughts and ideas, the item that was consistently brought up was.....are you ready for this.....**FACEBOOK**. I have been fairly proud of myself for learning how to email and moderately use the computer, but I have totally avoided the social networking scene. I am now reconsidering my position. A new generation is coming up and they REALLY use Facebook. I think LFMC needs a Facebook page with links?( or whatever they call it) to LFMC, NFMC web sites and to our local clubs. I’m looking for someone who would like to be the “face” of LFMC on Facebook. Let me know if you are interested is working together on this project.

During these months, Kay Hawthorne and Melanie Perez will be traveling up Minnesota for a weekend planning session with the new incoming national president, Carolyn Nelson. Also, Melanie and I will be speaking at the Monroe Music Guild November meeting. We love our road trips to local clubs. It’s a time to make new friends and put faces to friends we’ve only known via emails



## TEACHERS / JUNIOR COUNSELORS

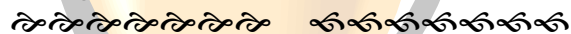
(This next section is geared especially for you.)

# FEDERATION AWARDS!

The **National Federation of Music Clubs** offers more than **\$750,000** in competition and award prizes on the local, state and national levels. The Biennial Young Artist and Ellis Duo-Pianists competitions award a total of **\$50,000** in awards and two years of performance bookings. Additional competitions are sponsored by the Federation in a wide range of categories, including voice, instrumental music, composition, dance, conducting, handicapped and visually impaired, and music therapy.

LFMC Kirkpatrick Supplemental Awards for Young Artist applicants - **\$1,000, \$500, \$500**

NFMC also sponsors more than 40 annual and biennial awards for students desiring to attend Summer Music Centers.



**LFMC** offers approximately **\$13,000** in awards annually:  
**JUNIOR AWARDS:**

Past Presidents State College Awards for graduating seniors - **five at \$1,000**

Bevill Piano Award for graduating senior majoring in Piano - **\$1,000**

Junior Summer Enrichment Awards (grades 6-10) - **ten at \$100**

Junior Composers Awards (through age 18) - **\$25, \$25, \$10, \$10**

Jones Award to Brevard - **\$500** Ballet Award - **\$750**

### COLLEGIATE AWARDS:

Student Auditions - \$1,100 in 13 categories. LFMC Kirkpatrick Supplemental awards are **\$500**

Award for Music Education Majors - **\$250**

Award for Piano Pedagogy Majors - **\$350**

[www.LFMC-music.org](http://www.LFMC-music.org)

**Please visit web sites for applications, requirements,  
deadlines**



## ANNOUNCEMENTS

**Liability Insurance:** Anna Kearns asked to remind each club president, event coordinators, and festivals chairmen that as soon as you have the necessary information needed for liability insurance you remember to send it on to her. If there were any TBA's in your information please get that information to Anna: [anakearns@aol.com](mailto:anakearns@aol.com).

**3yr. Consecutive Superior Pins:** LFMC will no longer provide these pins for our Festivals. Each club or each individual teacher may continue to purchase these pins directly from NFMC.

### Deadlines:

- Nov. 1<sup>st</sup>. Senior and Junior Club dues to State Treasurer, Kim Harvey**
- Feb. 1<sup>st</sup>. National Music Week essay contest to NFMC Regional Chairman**
- Feb. 1<sup>st</sup>. Junior Composers Contest to State chairman, Robin Thomas**

**SPRING CONVENTION: Dates: March 30<sup>th</sup> and 31<sup>st</sup>.** This year our state convention moves to the North Eastern Region. Ruston Music Club will be the hosting club, but Monroe Guild and Monroe Teachers Club will also have a part. We are excited to be visiting Ruston and have an opportunity to also visit La Tech's music facilities. The National guest speaker will be Michael Edwards, NFMC First Vice-President. Please mark your calendars and make a special effort to attend the Saturday activities. We all need to support our North Eastern Region! The Official Call will go out in February with more information.

**It's time for a little serious discussion. Please do not assume there will always be Federation activities offered in Louisiana. The state level organization is necessary to provide a connection between the local club and the national organization. People willing to sacrifice their time, energy and talents are needed on all three levels. Federation is not, nor has it ever been, just Festivals.**

As we move into our 2011- 2012 music year, the months will be very busy. My hope for LFMC is one of growth in outreach, depth in friendships, and development of musical arts in every member both Senior and Junior.

*Sincerely,*

*Irene Vile*

*ENVISIONING POSSIBILITIES (foyer finished, color picked out  
for kitchen cabinets)  
EXECUTING PROCEDURES (checking out new hardware)  
ENCOURAGING PARTICIPATION (Mark onboard)*